

UPVC / PVC CABLE DUCT PIPES

Pipe Dimension as per DIN 8062 Series 2 PN4 (4 BAR), Series 3 PN6 (6 BAR)

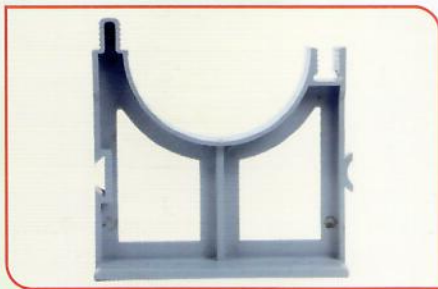
Installation for Telephone Cable, Electrical Cable Line, Inside Building,
Below and Aboveground Cable Systems

NORMAL SIZE	OUTSIDE DIAMETER MM		WALL THICKNESS MM			
			MEW	MOC	GENERAL	GENERAL
MM	MIN	MAX	MM	MM	MM	MM
50	50.0	50.2	2.5	3.0	1.8	2.4
75	75.0	75.3	3.0	2.6	1.8	2.2
90	90.0	90.3		4.5	2.7	
110	110.0	110.3	3.2	4.5	2.2	3.0
160	160.0	160.4	3.6	5.0	3.2	4.7
200	200.0	200.4	4.5		4.0	5.9
250	250.0	250.5			6.0	7.3
315	315.0	315.6			6.2	9.2

Standard Length : 3 and 6 Meters

Colour : Grey Colour

Socket : Solvent Weld Socket



Base Spacer
110mm - 160mm



Intermediate Spacer
110mm - 160mm



Bell Mouth / Bell Socket
50mm - 75mm - 90mm - 110mm
160mm - 200mm - 250mm



End Socket Plug
50mm - 75mm - 110mm - 160mm



End Cap
50mm - 75mm - 110mm - 160mm



Coupler / Socket
50mm - 75mm - 110mm - 160mm - 200mm

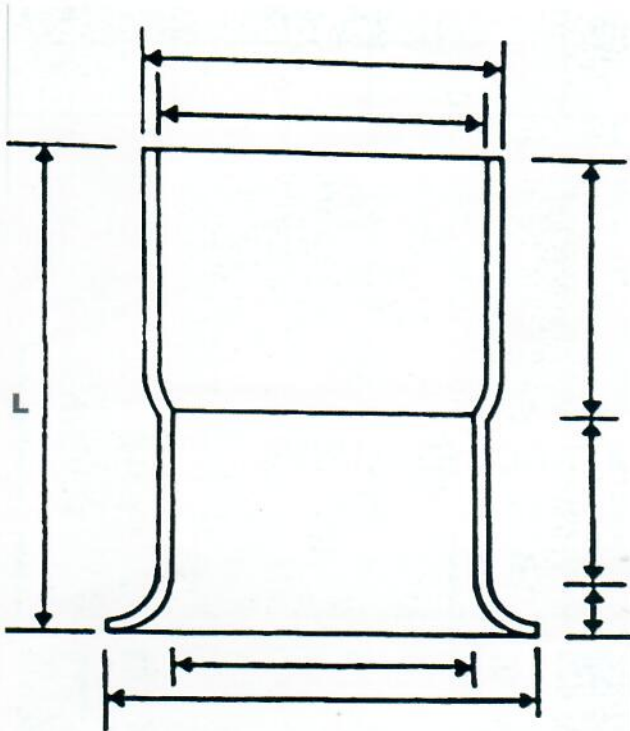
UPVC Cable Duct Accessories - Bell Mouth

Bell Mouth with Socket end - Grey colour :

Following are our standard size and length of Bell Mouths :

Size	Thickness	Length (L)
50mm	2.4mm	100mm
75mm	2.2mm	130mm
90mm	2.7mm	130mm
110mm	3.2mm	180mm
110mm	4.5mm	180mm
160mm	3.6mm	220mm
160mm	4.7mm	220mm
200mm	4.5mm	280mm
250mm	6.1mm	280mm

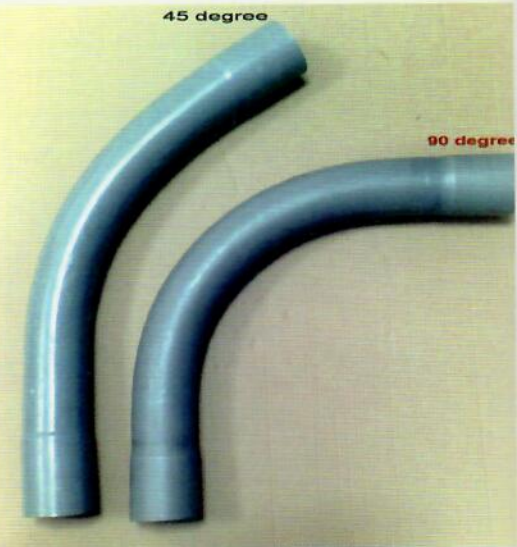
Special Bell Mouth - on request		
Size	Thickness	Length
50mm	2.4mm	225 mm
110mm	3.2mm	225 mm
160mm	3.6mm	225 mm
200mm	4.5mm	225 mm



UPVC LONG RADIUS BENDS

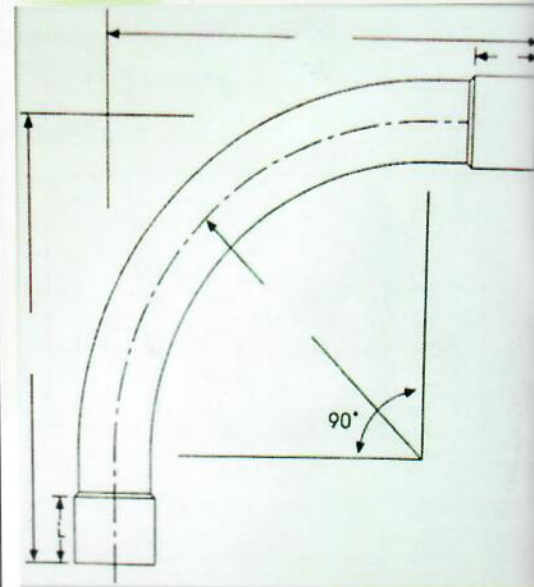
For Electrical / Cable Ducts / Drainage and Sewage Use - Light Duty :

Size & Thickness	Angle in degree	Length of Bend	Radius
50mm x 1.8mm	90° or 45°	54 cms	220 mm
75mm x 1.8mm	90° or 45°	75 cms	260 mm
75mm x 2.6mm	90° or 45°	75 cms	260 mm
90mm x 2.7mm	90° or 45°	99 cms	315 mm
110mm x 3.2mm	90° or 45°	100 cms	385 mm
110mm x 4.5mm	90° or 45°	100 cms	385 mm
160mm x 3.6mm	90° or 45°	150 cms	560 mm
160mm x 4.7mm	90° or 45°	150 cms	560 mm
200mm x 4.5mm	90° or 45°	152 cms	705 mm



For Water Line / Cable Duct / Electrical Use - Heavy Duty Bends - Dark Grey :

Size & Thickness	Angle in Degree	Length of Bend	Radius
50mm x 2.4mm	90° or 45°	54 cms	220 mm
50mm x 3.7mm	90° or 45°	54 cms	220 mm
63mm x 3.0mm	90° or 45°	57 cms	221 mm
63mm x 4.7mm	90° or 45°	57 cms	221 mm
75mm x 3.6mm	90° or 45°	77 cms	263 mm
75mm x 5.6mm	90° or 45°	77 cms	263 mm
90mm x 4.3mm	90° or 45°	99 cms	315 mm
90mm x 6.7mm	90° or 45°	99 cms	315 mm
110mm x 5.3mm	90° or 45°	100 cms	385 mm
110mm x 8.2mm	90° or 45°	100 cms	385 mm
160mm x 7.7mm	90° or 45°	150 cms	560 mm
200 mm x 9.6mm	90° or 45°	152 cms	705 mm



- Note :**
1. Both ends socketed - Adhesive joint
 2. Colour : Light grey or dark grey
 3. 30 and 15 degree bends can be manufactured on request
 4. One end socketed bends are available on request